



JOIN THE **REVOLUTION**  
BATT MOBILE EQUIPMENT PTY LTD

# BME 220

Fully Electric Wheel Loader

BME220, is a full electric 20 tonne Integrated Tool Carrier Building on proven technology BME is enabling companies to adopt EV technology at affordable prices through delivering the extensive safety, operational and productivity benefits by eliminating diesel particulates, reductions in noise, maintenance and ventilation with increased speed and reliability.

## KEY FEATURES BME 220



20 tonne Integrated Tool Carrier



6 tonne rated load capacity wheel loader



Australian owned and engineered technology



ROPS/FOPS Certified Cabin



Quick hitch system fitted to machine



Li-Ion KREISEL (John Deere) battery pack - 730V nom



Patented KREISEL Electric Immersion Cooling Technology



Ultra Fast EV Charging - approximately one hour charge time



[www.battmob.com.au](http://www.battmob.com.au)



JOIN THE REVOLUTION  
BATT MOBILE EQUIPMENT PTY LTD

# BME 220

Fully Electric Wheel Loader



## Machine Specification

BME 220

### Parameter

Machine Weight – tare mass (no work tool)	20000 kg
Rated operating load	6000 kg
O/A length	8840 mm
O/A Height	3420 mm
Wheel centres	3300 mm
Track Centres	2150 mm
O/A width	2670 mm
Outside turning radius	7250 mm
Articulation angle	±37°
Speed – level (max)	1 <sup>st</sup> gear – 9 km/h 2 <sup>nd</sup> gear – 14 km/h 3 <sup>rd</sup> gear – 40 km/h
Rim pull	130 kN

SCAN QR CODE TO DOWNLOAD  
THE BME 220 BROCHURE



**BATT MOBILE  
EQUIPMENT** PTY LTD

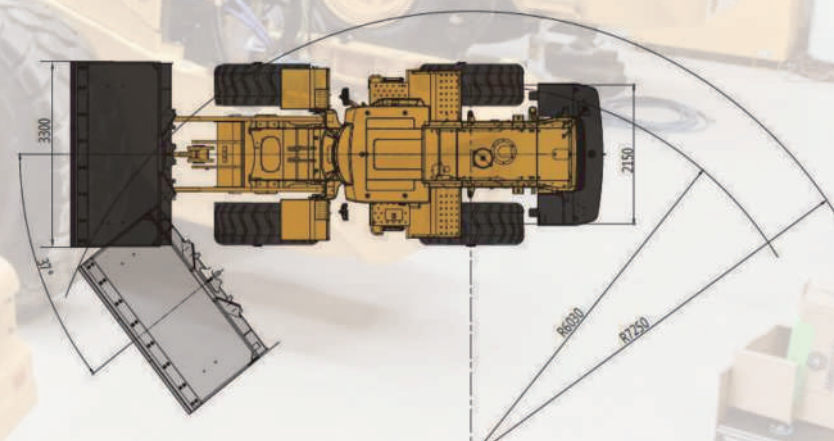
BME are agnostic to which battery technology and drivetrain system we use for our electric mobile equipment. This creates flexibility for BME to use the latest and most advanced technology on the market and in turn create an affordable yet high-end product, using trialled and tested components.

## Battery Specification

KREISEL BATTERY SYSTEM (JOHN DEERE OWNED COMPANY) KBP63

### Parameter

Cell Technology	Li-ion
Nominal Voltage	730 VDC
Energy Content	126kWh
Nominal Capacity	173.2 Ah
Expected Life	3000 cycles



### ADDRESS

12-14 Martin Drive,  
Tomago, NSW 2322

### CALL US

02 4028 0401

### EMAIL US

[bmesales@battmob.com.au](mailto:bmesales@battmob.com.au)